

EXPRESSION OF INTEREST FOR SELECTION OF O&M OPERATOR FOR OPERATION OF NEWLY CONSTRUCTED MODERN ABATTOIR AT GADAKANA, BHUBANESWAR

The Government of Odisha (GoO), through Housing and Urban Development Department (HUDD) has set up Odisha Urban Infrastructure Development Fund (OUIDF) to develop and finance urban infrastructure projects in the state of Odisha.

OUIDF has extended financial assistance to Bhubaneswar Municipal Corporation (BMC) for Construction of Modern Abattoir at Gadakana. The Modern Abattoir is a step forward in the direction of curtailing road side slaughtering of animal which will act as a upstream project for supply of meat to the Modern Meat Markets including 30 Modern Meat Selling Units constructed by BMC at 2 locations. BMC is also in the process of setting up more such meat markets at various locations.

BMC is now in the process of identification of a Firm to Operate & Maintain the recently inaugurated Modern Abattoir.

In this regard, OUIDF on behalf of BMC invites Expression of Interest from reputed Firms with experience of operating and handling a Private / Public / Government Modern Abattoirs or Slaughtering Units for Operations & Maintenance of the Modern Abattoir at Gadakana for service to local butchers / meat vendors or any other person who would like to avail the services of the Modern Abattoir. The broad scope would include –

- Operations & Maintenance of the Abattoir – This would include proper operation, handling of all the equipment of the plant & building and carrying out maintenance of the facility.
- Collection of Slaughter Charges
- Mobilisation of Resources
- Maintain Sanitary & Hygiene Requirements

The Operator shall possess adequate experience and resources for carrying out the Operations & Maintenance.

Interested Firms shall provide information as per the formats given in this EOI document.

A note on the facility available in the Modern Abattoir at Gadakana is shared in Annexure I. Firms are also welcome to visit the facility here in Bhubaneswar and may get in touch with OUIDF or BMC for scheduling of such visits.

The information in the prescribed format may be shared over email to the mail addresses below by 16:00 hours on or before 1st December 2017 with superscribing **"Expression of Interest for Selection of Operator for Operations & Maintenance of Modern Abattoir at Gadakana, Bhubaneswar"**

Secretary OUIDF & Ex-Officio Special Secretary to Government of Odisha,
Housing & Urban Development Department,
Address: OUIDF Trust, Zone A/2, Fourth Floor, Fortune Towers, Bhubaneswar-751023
Phone: 0674-2300396, 2300397
Email: ouidf.hudd@gmail.com

Additional Commissioner, BMC
Address: BMC, Vivekananda Marg, Bhubaneswar
Email: adc1@bmc.gov.in

For any queries/ clarifications relating to submission of EOI please send email to ouidf.hudd@gmail.com

Based on the responses to the EOI, RFP will be invited for above work.

Annexure I

Modern Abattoir at Gadakana, Bhubaneswar **(Bhubaneswar Municipal Corporation)**

1. Introduction

Odisha has a huge demand in non-vegetarian food products especially mutton. However the practice of slaughtering of goats is still very primitive and unhygienic. OUIDF proposes to develop Modern Abattoirs across the state which would include slaughtering activity in a hygiene environment. The facility would include mechanized modern slaughtering system, rendering plant for processing of slaughter house waste, cold storage, effluent treatment plant as well as a lairage area.

OUIDF has already funded Bhubaneswar Municipal Corporation to develop a pilot Modern Abattoir in Bhubaneswar for which the construction has already been completed and Bhubaneswar Municipal Corporation is in the process of appointing an Operator. The project has a capacity of slaughtering 50 small animals per shift.

OUIDF is looking to replicate the similar plants in more locations in Bhubaneswar as well as other cities. Opportunities in Cuttack and Sambalpur have already been identified. Other potential towns are being identified.



2. Site Details

The Plant is located on a plot of area 0.4 acres located in Gadakana locality of Bhubaneswar. The Co-ordinates of the site is 20°19'53.83"N, 85°49'44.01"E.

The site can be approached from Damana Square (on the Nandan Kanan Road) which is approximately 800m from the site. The site can also be approached from Mancheswar Station Road

which is approximately 1.2 kms from the site. The site is connected from a black top road from the approaches.



3. Project Components

The components of the project include:

- (i) Slaughter House Building (G+1 RCC Building) with Slaughter Line of capacity 50 small animals per shift). The Plinth Area of the structure is approximately 200 sqm.
- (ii) Rendering Plant (G+1 RCC Building) with capacity to process 1 Ton of Slaughter House waste per hour. The Plinth Area of the structure is approximately 150 sqm.
- (iii) Lairage Shed (Area: 100 sqm approx.)
- (iv) Effluent Treatment Plant (Activated Sludge Process of capacity 10 KLD) which includes equalization tank, physical and chemical treatment processes.
- (v) Administrative Building (G+2 RCC Building) with plinth area approximately 110 sqm.

4. Details of Plant and Equipment

- a) Slaughter House Line of 50 goats per shift

SI No.	Items	Qty	Unit	Make	
a	Railing			Fabricated	
i	Railing for driving the animal up to stunning box	1	Set		
b	Stunning Area				
i	Stunning Box	1	No		
ii	Electrical Stunner	2	Nos.		
iii	Hoist	1	No		
iv	Elevator Arm	1	Set		
c	Bleeding Area				
i	Bleeding Track	6	Mtrs.		
ii	Bleed rail shackles	10	Nos.		
iii	Blood Catchment Trough	1	No		
iv	Neck Cutter.	1	No		
d	Dressing Area				Fabricated
i	Dressing Track	10	Mtrs.		
ii	Dressing Hooks	100	Nos.		
iii	De skinning machine	1	No		
iv	Green Offal Tray upto Offal Room	1	No		
v	Carcass wash screen (SS)	1	No		
vi	Washhandbasin&Knifesterilizerwithsoapdispenser	3	Nos.		
vii	M.S. Stand (Stunning & Dressing)	2	Nos.		
vii	Knife sharpener	1	No		
ix	Set of Knives	20	Set		
x	Waste product trucks (SS)	3	Nos.		
xi	Jet Wash System for cleaning Carcass	1	No		
xii	Pressurised washing facilities with hot & cold water installed at one location in the hall	1	No		
xiii	SS tank with secondary perforated floor and two nos. of tap for white offal	1	No		
xiv	SS Packing Table	1	No		
e	Dispatch Area				
i	Dispatch Rail	12	Mtrs.		
ii	Digital Weighing Scale	1	No		
f	Scrubbing Area				
i	Boot washer	1	No		
ii	Boot stand (SS)	1	No		
iii	Partition racks	1	No		
g	Steel Structure				
i	Secondary steel work (Galvanized) (Includes I-section, channel-section, Flanges, Nut & Bolts etc)	1	Set		
ii	Refrigerated Van	1	No	Tata	

SI No.	Items	Qty	Unit	Make
				Youdha
i	Aprons	50	Nos.	Kolkata
ii	Gum boots	25	Nos.	
iii	Gloves	25	Nos.	
iv	Helmets	25	Nos.	
v	Stamp	3	Nos.	
vi	Printing Papers	5	Packets	
vii	Ink (Edible grade)	5	Ltrs.	
viii	Sanitizers	5	Ltrs.	
ix	Disinfectants	5	Ltrs.	
x	Cold room having capacity 35000btu / hr (size 13'8" x 17'4" x 14' (ht) with 80 mm thick PUF insulated panel for wall and ceiling 78" x 34" hinged door & air cooled refrigeration system with R22 refrigerant providing room temperture : 4 degree to 0 degree (Ambient temperture considered - 40 degree) pull down time 24 hrs for cold store room.	1	Lot	Carrier

b) Rendering Plant (1 Ton / Hr)

SI No.	Items	QTY	Unit	Make
a	Pre-breaker (for cutting whole chicken /condemn carcass in small pieces) (capable to cutdown the carcass to max. Size of 50 mm atleast from one side)	1	No.	Fabricated
b	Screw conveyor room pre-breaker to cooker	1	No.	
c	Cooker(cap:1000 ltrs.)	1	No.	
d	Percolating Tank	1	No.	
e	Oil centrifuge	1	No.	
f	Cooling Platform	1	No.	
g	Screw conveyor from platform to hammer mill	1	No.	
h	Hammer mill unit (capacity 600 kg / hr)	1	No.	
i	Shell & tube condenser capacity 500 M3 / Hr.	1	No.	
j	Cooling Tower	1	No.	
k	Fat Transfer Tank Cum Cooking Tank with Gear Pump	1	No.	
l	Fat Settling tank (capable of holding 600 ltrs.)	1	No.	
m	Electric control panel	1	No.	

SI No.	Items	QTY	Unit	Make
n	Steam Generator (Boiler)(LDO/HSD/AGRO WASTE FIRED) (capacity 600 kg / hr)	1	No.	Thermax
o	Inspection platform	1	No.	Fabricated
p	Chain Hoist(1 Ton) 1 No.	1	No.	
r	Set of knives	1	No.	Kolkata

c) Effluent Treatment Plant of 10 KLD capacity using Activated Sludge Process

SI No.	Item	Qty.	Unit	make
1	Stainless Steel (SS 304 Grade) Bar Screens of size 600 mm x 400 mm.	2	Nos.	Fabricated
2	Effluent Lifting Pumps (MOC-CI Casing & Impeller) having capacity 1.0 m ³ / hr with head of 10m.	2	Nos.	
3	MSEP (5 mm thickness) Coagulation Tank of size 0.8 m x 0.8 m x 0.8 m +0.4 m FB having capacity of 0.512 m ³ .	1	No	
4	MSEP (5 mm thickness) Flocculation Tank of size 0.8 m x 0.8 m x 0.7 m+ 0.5 m FB having capacity of 0.448 m ³ .	1	No	
5	Stainless Steel Pitched Blade Type Flash Mixers of rating 0.5 HP and 70-100 RPM.	2	Nos.	
6	Lime Dosing System for Coagulation Tank, comprising of one Dosing pump (Capacity 0-30 LPH, Type-Meter Dosing, and One FRP Dosing tank (Capacity-200 Litres, Type MS Skid Mounted) with all accessories like Cover, Funnel & Sight Tube.	1	Set	
7	Alum Dosing System for Coagulation Tank, comprising of one Dosing pump (Capacity 0-12 LPH, Type-Meter Dosing, and One FRP Dosing tank (Capacity-200 Litres, Type MS Skid Mounted) with all accessories like Cover, Funnel & Sight Tube.	1	set	
8	Poly Dosing System for Flocculation Tank, comprising of one Dosing pump (Capacity 0-12LPH, Type-Meter Dosing, and One FRP Dosing tank (Capacity-200 Litres, Type MS Skid Mounted) with all accessories like Cover, Funnel & Sight Tube.	1	Set	
9	MSEP (5 mm Thick.) Primary Clarifier (dia 1.5 m, Height-2.5 m +Hopper Bottom) of Loading 0.6 m ³ / m ² / hr.	1	No	
10	MSEP (5 mm Thick.) Quality Average Tank (size 1.2 m x 1.2 m x 1.5 m +0.5 m FB) of capacity 2.163.	1	No	

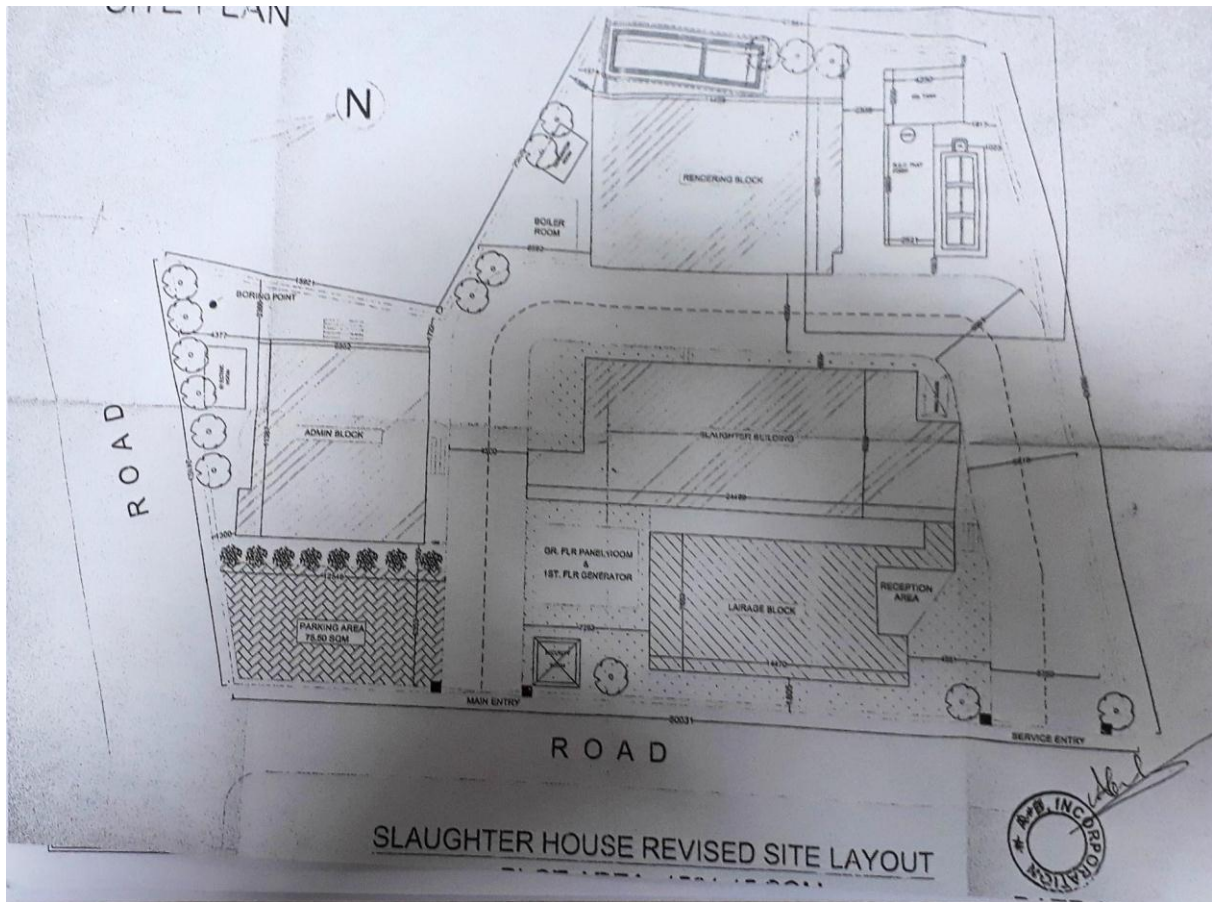
SI No.	Item	Qty.	Unit	make
11	MSEP (5 mm Thick.) Aeration Tank (Stage-I) of size 4.0 m x 4.0 m x 3.1 m +0.4 m FB) having capacity 49.6 m ³ .	1	No	
12	MSEP (5 mm Thick.) Secondary Clarifier (Stage-I) of dia 1.3 m & Height-2.5 m +Hopper Bottom having loading capacity 0.8 m ³ / m ² / hr.	1	No	
13	MSEP (5 mm Thick.) Aeration Tank (Stage-II) of size 2.0 m x 2.0 m x 2.8 m +0.4 m FB) having capacity 11.2 m ³ .	1	No	
14	MSEP (5 mm Thick.) Secondary Clarifier (Stage-II) of dia 1.3 m & Height-2.5 m +Hopper Bottom having loading capacity 0.8 m ³ / m ² / hr.	1	No	
15	MSEP (5 mm Thick.) Clear Water Tank of size 1.2 m x 1.2 m x 1.6 m +0.4 m FB) having capacity 2.3 m ³ .	1	No	
16	HDPE Sludge Holding Tank (For Secondary Sludge) having capacity 2.0 m ³ .	1	No	
17	Primary Clarifier Mechanism of Central Driven Type having dia 1.5 m and 3-5 RPM.	1	No	Fabricated
18	Secondary Clarifier Mechanism of Central Driven Type having dia 1.3 m and 3 -5 RPM.	2	Nos.	
19	Self Priming Aeration Feed Pumps (MOC - CI Casing & Impeller) having capacity 1.0 m ³ /hr with head of 10 m.	2	Nos.	
20	Self Priming type Sludge Recirculation Pumps (MOC-CI Casing & Impeller) having capacity 1.0 m ³ /hr with head of 10 m.	2	Nos.	
21	Twin Lobe type Root Air Blowers having capacity 90 m ³ /hr with head of 5 m WC.	2	Nos.	
22	Disk type Coarse Bubble Diffusers of 150 mm dia.	6	Nos.	
23	Tubular type Fine Bubble Diffusers of 63 mm dia & 600 mm long.	15	Nos.	
24	Chlorine Dosing System comprising of one Dosing pump (Capacity 0-6 LPH, Type - Meter Dosing, and One FRP Dosing tank (Capacity - 200 Litres, Type MS Skid Mounted) with all accessories like Cover, Funnel & Sight Tube.	2	Sets	
25	Centrifugal Filter Feed Pumps of 25 m head & capacity 2.0 m ³ /hr.	2	Nos.	

SI No.	Item	Qty.	Unit	make
26	MSEP Multigrade Sand Filter Column of 400 mm dia & 1200 mm height having filtration rate 15 m ³ /m ² /hr.	2	Nos.	
27	MSEP Activated Carbon Filter Column of 400 mm dia & 1200 mm height having filtration rate 15 m ³ /m ² /hr.	1	No.	
28	Self Priming Centrifuge Feed Pumps (MOC - CI Casing & Impeller) of 10 mm head & capacity 1.0 m ³ /hr.	2	Nos.	
29	Basket type Centrifuge of capacity 1.0 m ³ /hr.	1	No	
30	Chlorine Dosing System for Flocculation Tank, comprising of one Dosing pump (Capacity 0-12 LPH, Type - Meter Dosing, and One FRP Dosing tank (Capacity - 200 Litres, Type MS Skid Mounted) with all accessories like Cover, Funnel & Sight Tube.	1	Set	
31	Filters Media	1	Lot	
32	Flow Meter (Line Size - 25 NB).	2	Nos.	
33	Motors			
	Air blower (3.7 KW)	2	Nos.	
	Filter pump (0.75 KW)	8	Nos.	
	Induction motor (0.75 KW)	3	Nos.	
	1/2 HP	2	Nos.	
	3.7 KW	1	Nos.	
	Dozing system (100 watt)	4	Nos.	Kirlosker

The Layout Plan of the Plot, Slaughter House and Administrative Block is given in the Annexure II, III & IV.

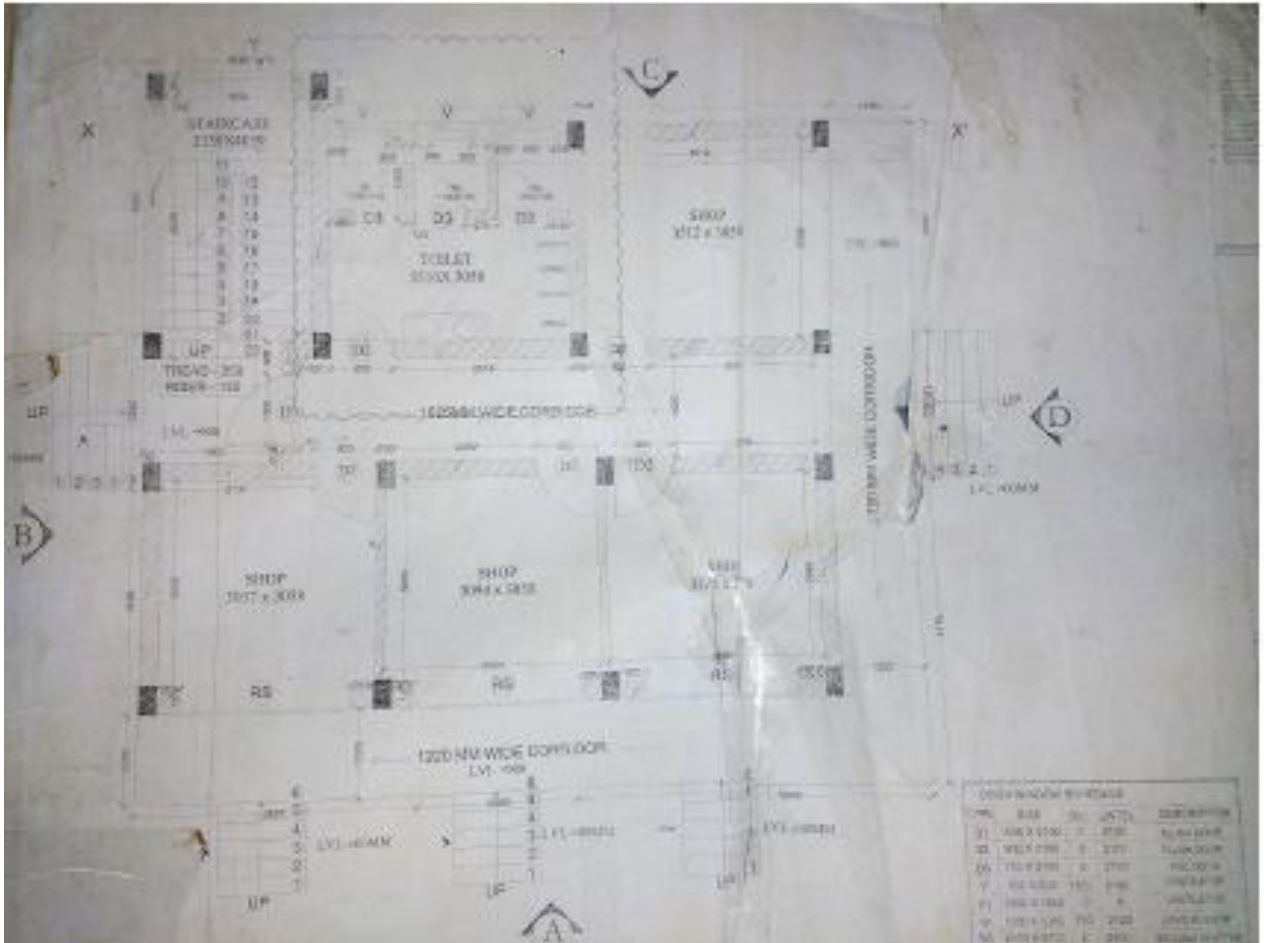
Annexure II

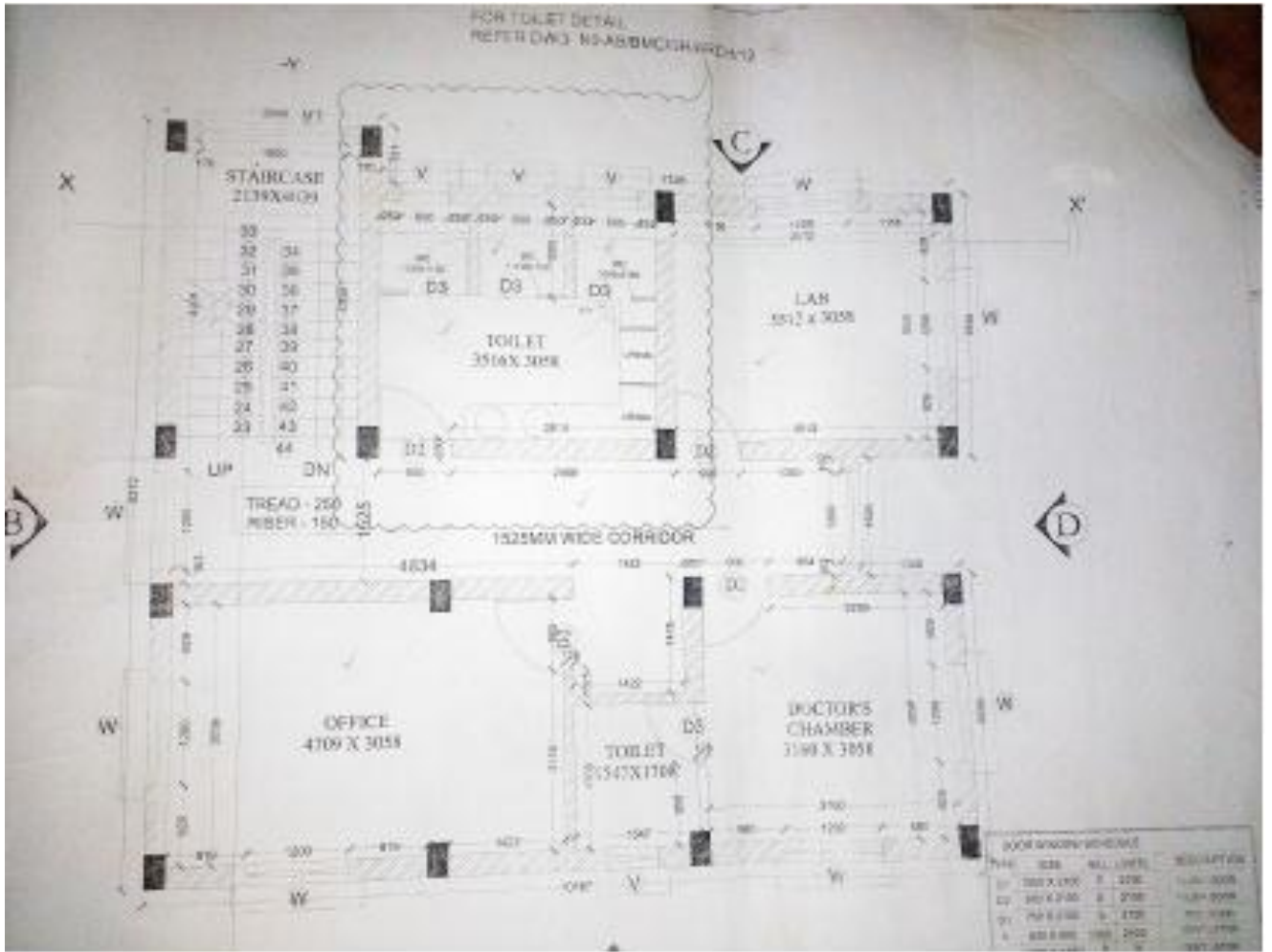
Layout Plan of the Plot

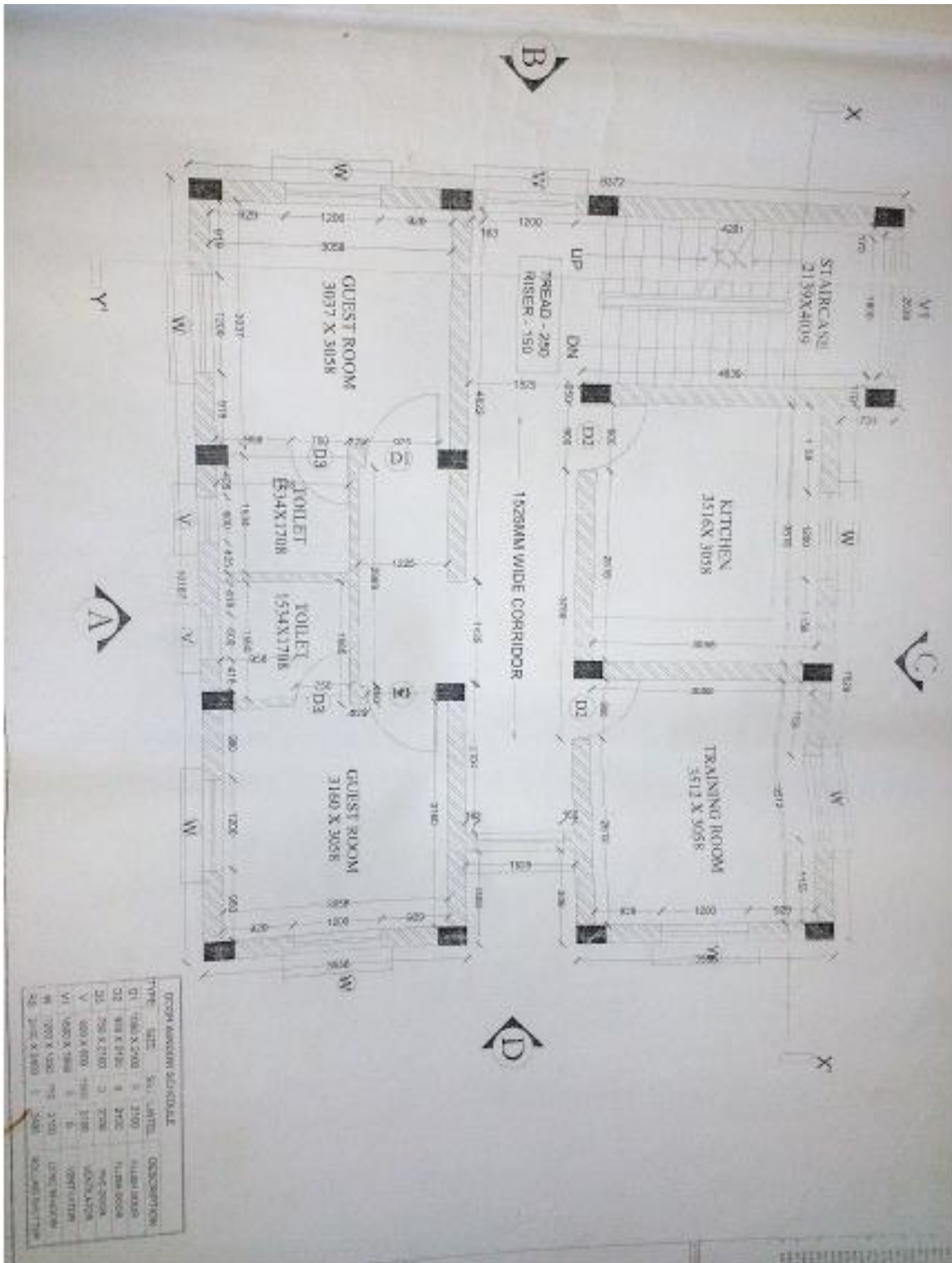


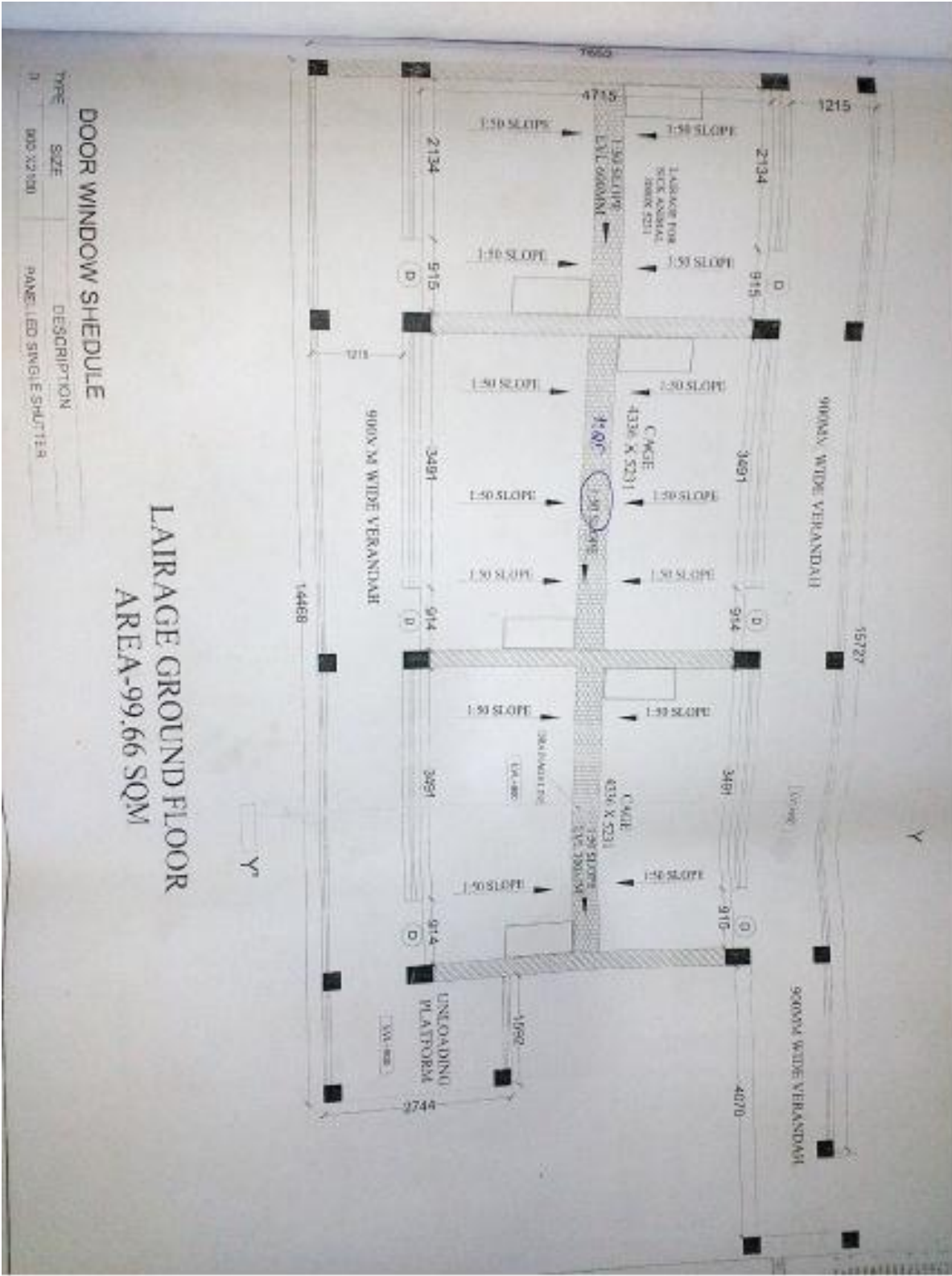
Annexure III

Layout of Slaughter House & Admin Block

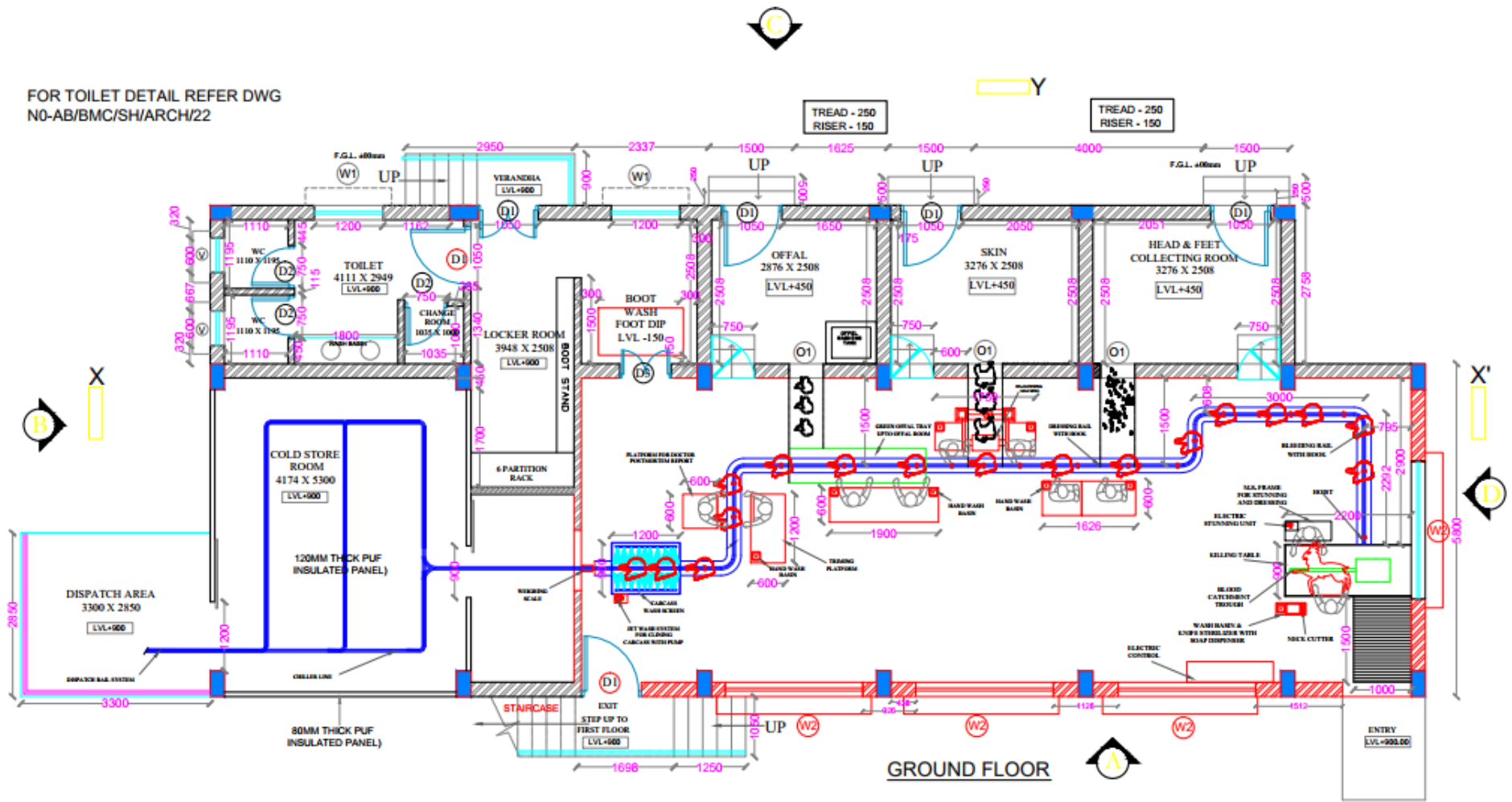






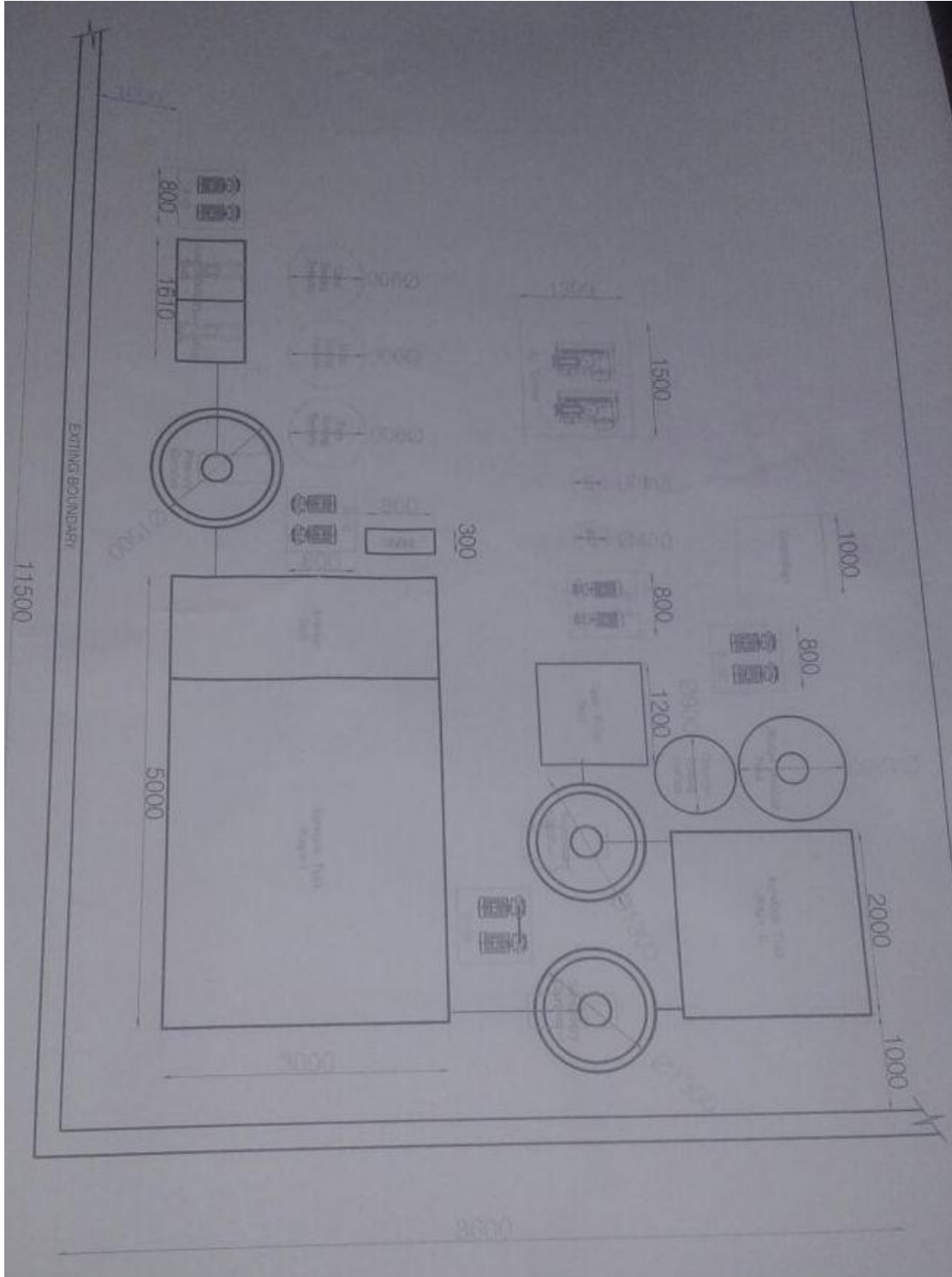


FOR TOILET DETAIL REFER DWG
 N0-AB/BMC/SH/ARCH/22



Slaughter House Plant

Annexure IV
ETP Layout



Form-1

Corporate profile

Sr. No.	Description	Particulars
1.	Name of the firm	
2.	Status(Legal entity)	
3.	Address with pin code	
4.	Contact person Telephone no. Mobile No. Email id:	
5.	Year of incorporation	
6.	Website of the firm	
7.	Details of Modern Abattoir / Slaughtering Units Operated by the Firm	
8.	Turnover of the Firm for the year FY 2016-17	

Signature of authorized representative of the firm

Form No. 2

- A. A detailed note on mode of operations proposed by the firm for Modern Abattoir at Gadakana, Bhubaneswar including the revenue models such as –
- Lease of the facility from BMC and payment of lease rental to BMC; Revenue earned from operations shall accrue to the operator
 - Operation and maintenance of the facility on behalf of BMC and recovery of fixed O&M charges from BMC on monthly basis; Revenue from abattoir will accrue to BMC
 - Operation and maintenance of the facility and also collection of revenue; Deficit if any in revenue will be collected from BMC in the form of monthly O&M deficit fees
 - Any other model
- B. Minimum period of operation of the facility desired by the firm

Signature of authorized representative of the firm